

Orienteering NZ Update for December 2014



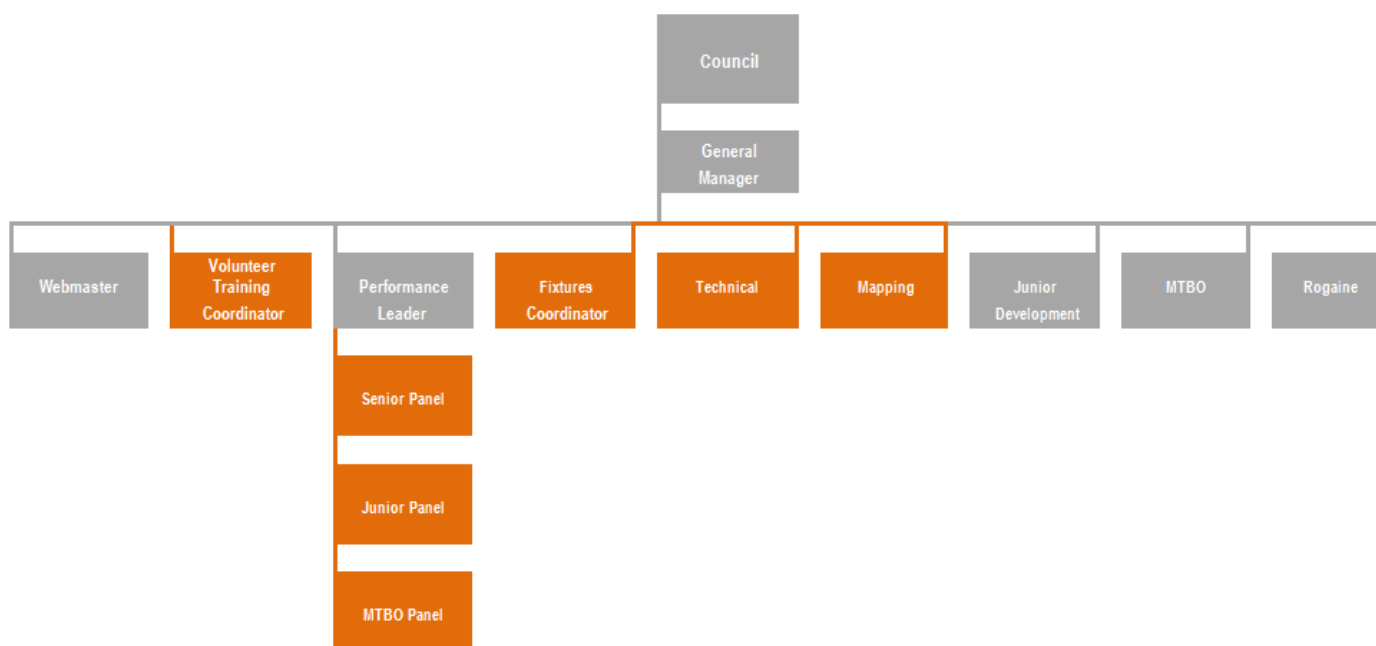
gm@orienteering.org.nz
www.orienteering.org.nz

Don't forget to register for the website so you can post your own news, blogs, events etc

ORIENTEERING NZ VACANCIES

Over the last few months the Council has been reviewing the current structure of Orienteering NZ, its tasks and the resources required to achieve those tasks. A new organisational structure, as shown below, illustrates the outcome of these discussions.

The new Orienteering NZ structure reflects the feedback received both during the 2013 Strategic Planning engagement process and more recently with the review of the Selection Policy.



The above structure highlights (in Orange) the roles for which we are currently recruiting. With the exception of the Volunteer Training Coordinator, all other roles are volunteer. The Junior Development, MTBO and Rogaine committees will be recruited in 2015, until this time these committee members will remain sitting on the respective committees.

Applications are being invited for the following volunteer committee positions:

It is expected members of the Orienteering NZ Committees or positions will have the following attributes:

TECHNICAL COMMITTEE MEMBERS

- Detailed knowledge of the requirements of the different sports which are the responsibility of the Orienteering NZ, namely orienteering, rogaine, and MTBO.
- In depth knowledge of the rules of orienteering as they apply to nationally and internationally-recognised events.
- Significant involvement in, and knowledge of, event planning and management, for all levels of participation.
- Awareness of educational needs and effective training methods for technical development.
- Understanding of resources currently available that may be utilised by clubs and Orienteering NZ.

SELECTORS

To sit on 1 of 3 panels

- Senior
- Junior
- Mountain Biking

A Selector should have:

- an awareness of the nature of elite and international competition
- a knowledge and interest in the capabilities and personalities of top New Zealand orienteers (junior, elite and veteran)
- well-connected throughout the orienteering community in New Zealand
- the ability to commit time to the selection panel which may include attendances as trial and selection events.

MAPPING COMMITTEE MEMBERS

- Detailed knowledge of the particular mapping requirements for Foot Orienteering and an understanding of the common mapping requirements for orienteering, rogaine and MTBO;
- In depth knowledge of the international standards for orienteering mapping namely:
 - International Specification for Orienteering Maps
 - International Specification for Sprint Orienteering Maps
 - International Specification for MTB Orienteering Maps
- Significant involvement in, and knowledge of, mapping and map production, particularly in the New Zealand context;
- Awareness of educational needs and effective training methods for mapping development;
- Understanding of resources currently available that may be utilised by clubs and Orienteering NZ.

FIXTURES COORDINATOR

The Fixtures Coordinator should have:

- excellent communication and motivational skills
- well-connected throughout the orienteering community in New Zealand
- sound interpersonal skills, as the role requires extensive liaison with many people
- the ability to organise and plan
- the ability to act as an enabler

VOLUNTEER TRAINING COORDINATOR

This is a Contracted role
at \$25/hr, 6 hours/week

The position requires an experienced orienteer with experience in education, training and/or professional development.

The Volunteer Training Coordinator should have:

- excellent communication and motivational skills
- well-connected throughout the orienteering community in New Zealand
- sound interpersonal skills, as the role requires extensive liaison with many people
- the ability to organise and plan
- event organisation experience, both planning and controlling
- coaching experience (preferred)

Applications to :
Catriona McBean
General Manager
gm@orienteering.org.nz

Full position descriptions for all these roles are available on the Orienteering NZ website.

Applications for these positions close on 31 January 2015

TEAM SELECTION UPDATE

The other rather large piece of work undertaken by the Council has been the review of the Selection Policy. Feedback from members was reviewed and we thank everyone who took the time provide comments on this. As outlined in the Policy Update in the last Orienteering NZ Update Oct-Nov, key selection events/trials have been split out from normal competition events to enable athletes to focus and excel in different events without having to compromise titles for selection.

The following diagrams represent the updated Team Selection process for 2015 and beyond.

**Don't forget to check out the Events Calendar on the
Orienteering NZ website for all Upcoming Events**



Team Priorities & Selection Panel

Priority	1	2	3	4
Senior	WOC JWOC	World Cups ANZ Challenge	National Squad ANZ Test Match (Pinestars) World Games	
Junior	Southern Cross Challenge ANZ Schools Test D Squad Junior Camp	ANZ Challenge (Schools)		World Schools School World Schools Rep
MTBO	World MTBO JWMTBO	ANZ MTBO	MTBO World Cups	

Trial Events and Selection Criteria

National Champs plus	QB Trials	Not National Champs, pre-selection, Jan-Mar	All relevant form	NZ Schools Champs
WOC WUOC World Games	Southern Cross Challenge World Schools Rep	JWOC	World Cups ANZ Challenge National Squad ANZ Test Match (Pinestars) ANZ Schools Test Development Squad Junior Camp ANZ Challenge World MTBO JWMTBO ANZ MTBO MTBO World Cups	World Schools School



JWOC TRAILS

21-22 March – Wairarapa

Wellington and Hutt Valley Orienteering Clubs will be hosting the 2015 JWOC Trials.

More information on the trials will be provided shortly.

POLICY UPDATE – NEW POLICY MANUAL

A new Policy and Procedures Manual has been developed. It is intended to be readily accessible to Council members, the membership and staff in order they can identify official policy of any particular Orienteering NZ issue.

Many of these policies were incorporated within other pre-existing Orienteering NZ policies (eg. Miscellaneous Policy) and have been updated and amended. New policies have also been added.

Over 2015 new policies will be added to this manual, and policies will be amended and updated on a regular basis, reflecting the changing environment in which Orienteering NZ operates.

Copies of these policies can be found on the Orienteering NZ website

<http://www.orienteering.org.nz/resources/onz-policies/>

Part	No	Policy	Title
A	1	Constitution	New Zealand Orienteering Federation Constitution
	2		Orienteering NZ Rules
B	1	Financial Management	Financial Operation of Orienteering NZ
	2		Reimbursement of Expenses
	5		Budgeting
	6		Investment
	7		Fraud
	8		Approval of End of Year Financial Statement
	9		Reserves and Restricted Funds
	10		Insurance
	11		Affiliation Fees
	13		Travel Equalisation
	14		Payments for Clinics
D	1	Committees	
	2		Technical Committee
	3		Selection Panels
	4		Mapping Committee
G	1	Competitions	Selection Policy

CAMPS

Thanks to the following funders who have assisted with the costs for our camps



NATIONAL RESULTS

MTBO CHAMPIONSHIPS

	Open	
Brent Edwards	Sprint	Marquita Gelderman
Chris Forne	Long	Marquita Gelderman
Conal Boland-Bristow	Rogaine	Emily Forne

SELECTION ANNOUNCEMENTS

WORLD CUP TEAM

Congratulations to the following orienteers who have been selected to represent New Zealand to compete in the World Cup in Australia during the 2015 Oceania Championships in Tasmania 2 – 11 January 2015.

Men	Women
Devon Beckman (Sprint only)	Renee Beveridge
Gene Beveridge	Kayla Fairbairn
Chris Forne	Sonia Hollands
Matt Goodall (Sprint only)	Lizzie Ingham
Nick Hann	Tessa Ramsden
Shamus Morrison (Sprint, Middle)	Laura Robertson
Matt Ogden	Imogene Scott
Thomas Reynolds	Georgia Whitla
Tim Robertson	
Nick Smith (Middle only)	Team Manager
Cameron Tier (Sprint, Middle)	Malcolm Ingham

ANZ CHALLENGE TEAM

The orienteers to represent New Zealand in the ANZ Challenge against Australia during the 2015 Oceania Championships in Tasmania 3 – 11 January 2015 are:

Men	Grade	Women
Connor Cleary	16	Katie Cory-Wright
Max Griffiths		Danielle Goodall
Andrei Popovici		Tegan Knightbridge
Devon Beckman (R,M,L)	18	Kayla Fairbairn (R,M)
Ed Cory-Wright		Sophie Harrison
Tommy Hayes		Lara Molloy
Nick Smith (S)		Ellie Molloy (S,L)
Matt Goodall (R,M,L)	20	Vida Fox
Shamus Morrison (R,M,L)		Sonia Hollands (R,M)
Jonty Oram (S)		Lauren Holmes
Cameron Tier (R,M,L)		Kate Salmon (S,L)
Kieran Woods (S)		
Tim Robertson - <i>withdrawn</i>		
Greg Barbour	45	Jenni Adams
Alistair Cory-Wright		Susan Edwards
Bill Edwards		Marquita Gelderman
Guy Cory-Wright	50	Jean Cory-Wright
Jeff Greenwood		Carey Nazzer
Paul Ireland		Lynn Stanton
Martin Crosby	55	Lisa Mead
Mike Harding		Phillipa Poole
Geoff Mead		Annette Orchard
Rob Garden	65	Julia Fraser - <i>withdrawn</i>
Dave Middleton		Mary Moen - <i>withdrawn</i>
Derek Morrison		Joanna Stewart - <i>withdrawn</i>